

WE ARE

**PLAYFUL  
MODERN  
ENDURING**

**PAVILION<sup>®</sup>**

OUTDOOR UPHOLSTERY  
FABRIC



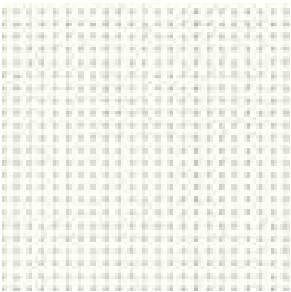


LOUNGE

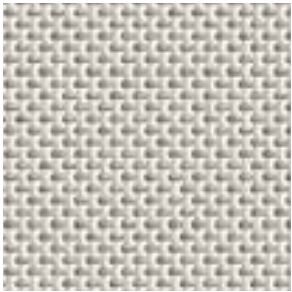
GRADE B



Sage 7720FR-5049



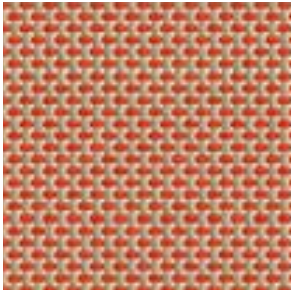
White 7720FR-5701



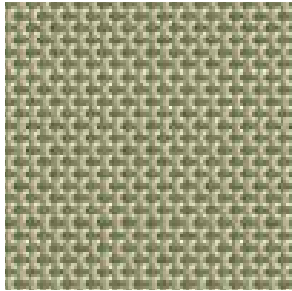
Quartz 7720FR-50932



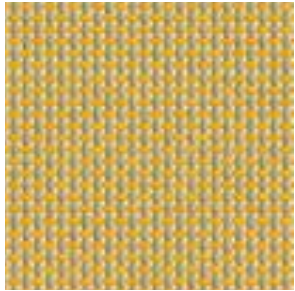
Shea 7720FR-50931



Cheyenne 7720FR-50928



Reed 7720FR-50930



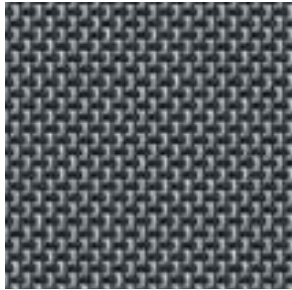
Saffron 7720FR-50929



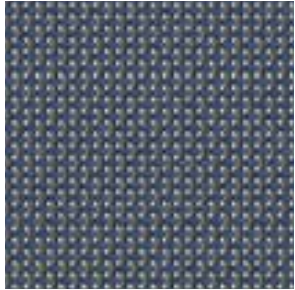
Zinc 7720FR-5703



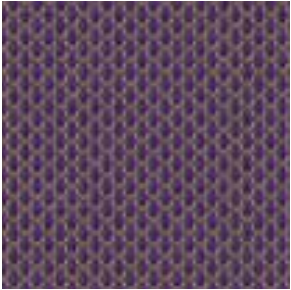
Sea Spray 7720FR-50934



Dark alu 7720FR-5706



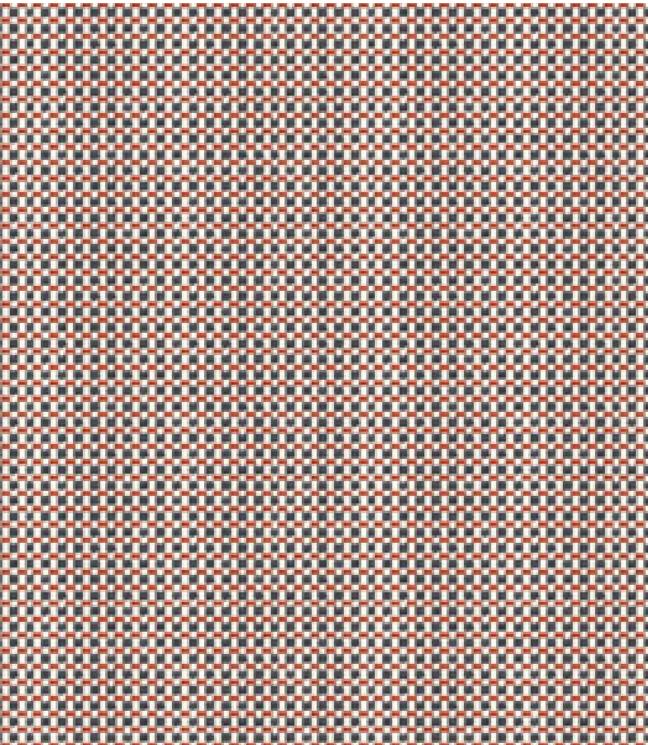
Abyss 7720FR-50935



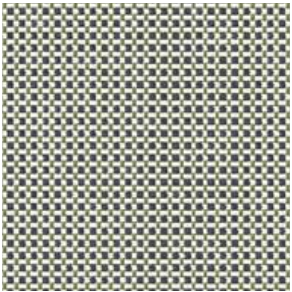
Purple 7720FR-5708

ELIOS

GRADE B



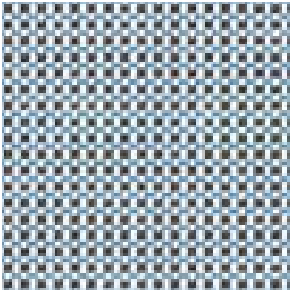
Ladybird 7740-51036



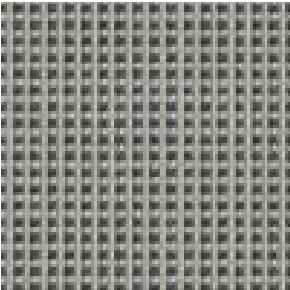
Birch 7740-51042



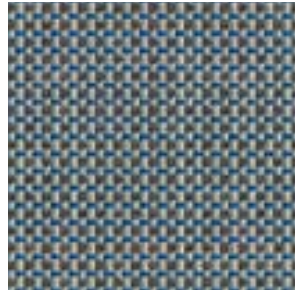
Caramel 7740-51035



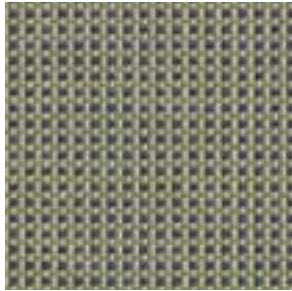
Spring 7740-51037



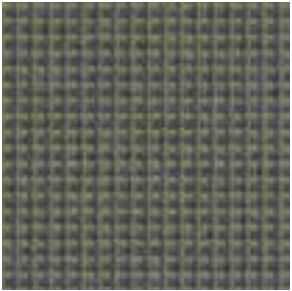
Basalt 7740-51034



Blue jay 7740-51038



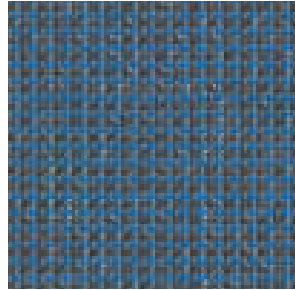
Sparrow 7740-51041



Evergreen 7740-51040



Dark night 7740-51033



Sodalite 7740-51039

	Lounge 7720FR	Elios 7740	
<b>Technical properties</b>			<b>Standards</b>
Weight	14.8 oz/sqyd (500 g/m <sup>2</sup> )	13.3 oz/sqyd (450 g/m <sup>2</sup> )	EN ISO 2286-2
Width	70.9 in (180 cm)	55.1 in (140 cm)	
Composition	28% high tenacity polyester yarn 72% PVC	18% high tenacity polyester yarn 65% PVC 17% flocked yarn*	
<b>Physical properties</b>			
Softness	n/a	2g	ASTM D5342-D5650
Abrasion resistance**	>600,000 double rubs - Heavy Duty		ASTM D4157 Wyzenbeek
Tear strength(warp/weft)	18 / 15 daN	22 / 15 daN	DIN 53363
Tensile strength(warp/weft)	150 / 150 daN/5 cm	160 / 100 daN/5 cm	ISO 1421
Light stability	GS=4 at 700h / >1,500 QUV		ASTM G154: UVA340
Mold Resistance	Method A, degree 0, excellent		ISO 846-A
Extreme working temperatures	-22°F / +158°F	14°F / +158°F	
<b>Flame retardancy</b>			
Rating	Pass		IMO MSC.307(88) (2010FTP Code) Annex 1 Part 8
<b>Management systems</b>			
Quality			ISO 9001
Environment			ISO 14001
<b>Certifications, labels, warranty, recycling</b>			



†

5 year  
warrantyPhthalate  
freeSmart  
Yarn

Fabrication guide & cleaning instructions available upon request

\*This material will behave similar to a velvet; fabricate from only one direction off the role. Please review the fabrication instruction manual and video for this product prior to use.

\*\* Multiple factors effect coated fabric durability and appearance retention, including end-user application and proper maintenance. Wyzenbeek results above 100,000 double rubs have not been shown to be a reliable indicator of increased coated fabric lifespan.

† Industrial capacity operational in 2022

Quoted technical characteristics are average values with a +/- 5% tolerance. Our products are subject to improvements resulting from technical developments and we reserve the right to modify their characteristics at any time. The purchaser of our products is responsible for checking the above data.

**PAVILION**

305.823.3480  
pavilionfurniture.com