

WE ARE

**PLAYFUL
MODERN
ENDURING**

PAVILION[®]

OUTDOOR UPHOLSTERY
FABRIC

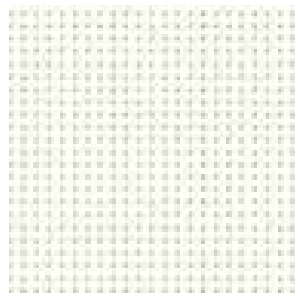


LOUNGE



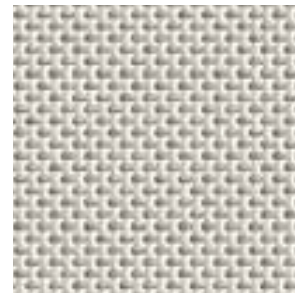
Sage

7720FR-5049



White

7720FR-5701



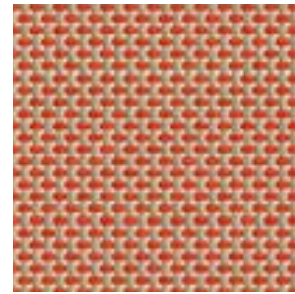
Quartz

7720FR-50932



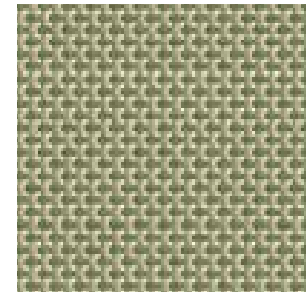
Shea

7720FR-50931



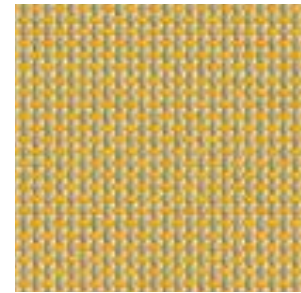
Cheyenne

7720FR-50928



Reed

7720FR-50930



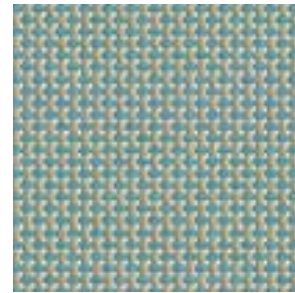
Saffron

7720FR-50929



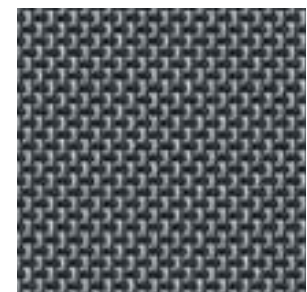
Zinc

7720FR-5703



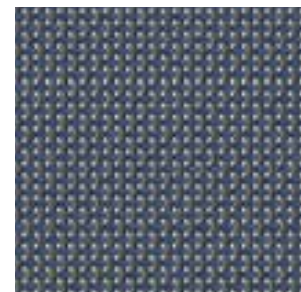
Sea Spray

7720FR-50934



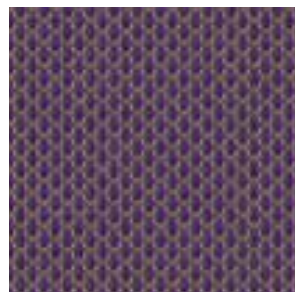
Dark alu

7720FR-5706



Abyss

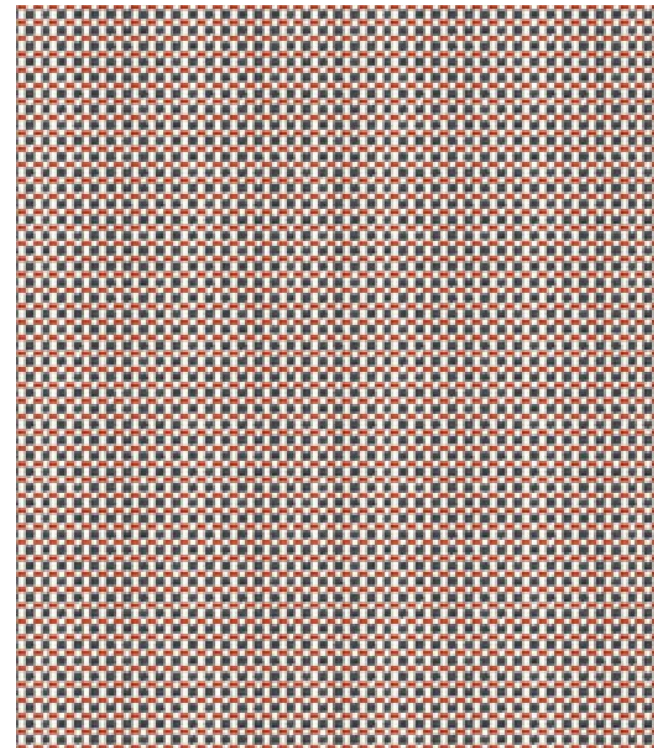
7720FR-50935



Purple

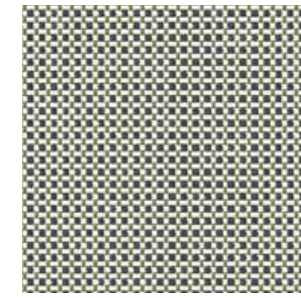
7720FR-5708

ELIOS



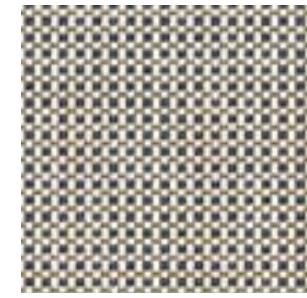
Ladybird

7740-51036



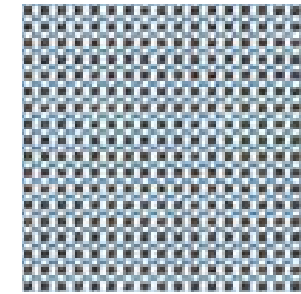
Birch

7740-51042



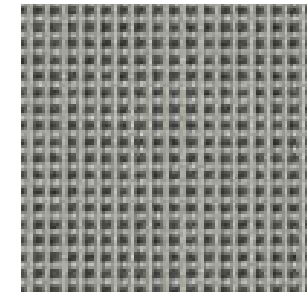
Caramel

7740-51035



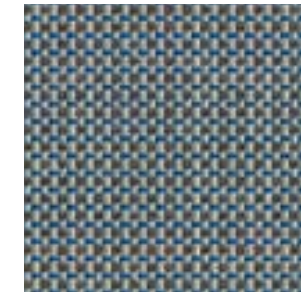
Spring

7740-51037



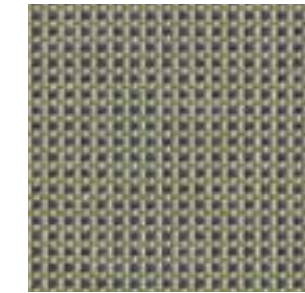
Basalt

7740-51034



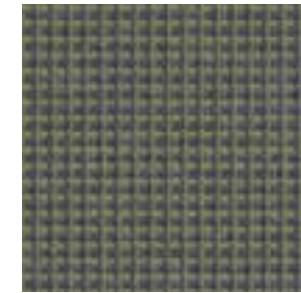
Blue jay

7740-51038



Sparrow

7740-51041



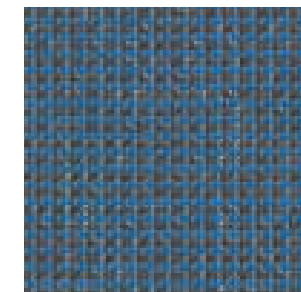
Evergreen

7740-51040



Dark night

7740-51033



Sodalite

7740-51039

LOUNGE | ELIOS

	Lounge 7720FR	Elios 7740	
	Technical properties		Standards
Weight	14.8 oz/sqyd (500 g/m2)	13.3 oz/sqyd (450 g/m2)	EN ISO 2286-2
Width	70.9 in (180 cm)	55.1 in (140 cm)	
Composition	28% high tenacity polyester yarn 72% PVC	18% high tenacity polyester yarn 65% PVC 17% flocked yarn*	
	Physical properties		
Softness	n/a	2g	ASTM D5342-D5650
Abrasion resistance**	>600,000 double rubs - Heavy Duty		ASTM D4157 Wyzenbeek
Tear strength(warp/weft)	18 / 15 daN	22 / 15 daN	DIN 53363
Tensile strength(warp/weft)	150 / 150 daN/5 cm	160 / 100 daN/5 cm	ISO 1421
Light stability	GS=4 at 700h / >1,500 QUV		ASTM G154: UVA340
Mold Resistance	Method A, degree 0, excellent		ISO 846-A
Extreme working temperatures	-22°F / +158°F	14°F / +158°F	
	Flame retardancy		
Rating	Pass		IMO MSC.307(88) (2010FTP Code) Annex 1 Part 8
	Management systems		
Quality			ISO 9001
Environment			ISO 14001
	Certifications, labels, warranty, recycling		



5 year warranty

Phthalate free

Smart Yarn

Fabrication guide & cleaning instructions available upon request

*This material will behave similar to a velvet; fabricate from only one direction off the role. Please review the fabrication instruction manual and video for this product prior to use.

** Multiple factors effect coated fabric durability and appearance retention, including end-user application and proper maintenance. Wyzenbeek results above 100,000 double rubs have not been shown to be a reliable indicator of increased coated fabric lifespan.

† Industrial capacity operational in 2022

Quoted technical characteristics are average values with a +/- 5% tolerance. Our products are subject to improvements resulting from technical developments and we reserve the right to modify their characteristics at any time. The purchaser of our products is responsible for checking the above data.

PAVILION

305.823.3480
pavilionfurniture.com

06/2021