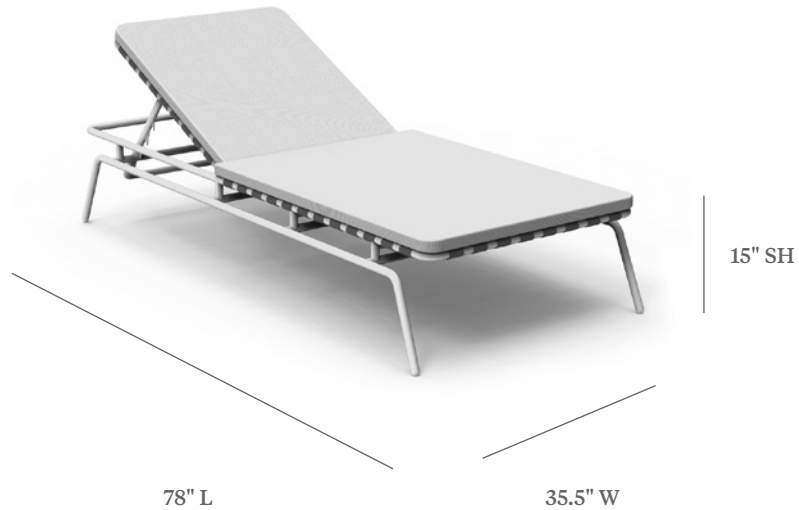


MARINA



CHAISE LOUNGE

ITEM CODE	MN 2890L with FlexStrap seat and back and Removable Cushions
WIDE	35.5"
LONG	78"
SEAT HEIGHT	15"

MATERIALS
Powder coated aluminum frame.
FlexStrap seat and back.

FINISHES
Please visit our website www.pavilionfurniture.com

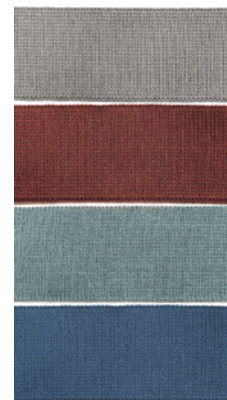
ACCESSORIES
CV-MN 2890 Protective Cover

WARRANTY
See our website www.pavilionfurniture.com

MAINTENANCE
See our website www.pavilionfurniture.com

FlexStrap

Pavilion's FlexStrap is engineered for durability and comfort, and designed with a rich woven effect made with reinforced Sunbrella® yarns elevating the overall appearance and performance of interwoven strap seating surfaces for indoor/outdoor furniture. The two-inch width strap is interwoven by hand and secured over a powder-coated aluminum framework creating a unique seating surface, while providing good stretch and recovery for comfort returning to a taut resistance when not in use.



COLOR NAME

- 1 CADET
- 2 HENNA
- 3 SPA
- 4 SAPPHIRE

PAVILION

305 823 3480
pavilionfurniture.com